



METRIQUES

Douilles à aiguilles

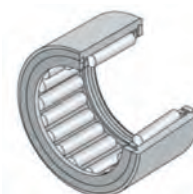
Code	Réf	Diam. int.	Diam. ext.	Larg.
W821562	HMK1820	18	25	20
W821561	HMK1720C	17	24	20
W862519	HMK1715	17	24	15
W821439	BK1812	18	24	12
W821440	BK1816	18	24	16
W862392	BK2016D	20	26	16
W821442	BK2020	20	26	20
W862393	BK2030ZWD	20	26	30
W821568	HMK2030	20	27	30
W929686	HK2020LL/5S	20	26	20
W821514	HK2020LL/3AS	20	26	20
W821512	HK2018L/3AS	20	26	18
W929682	HK2016LL/3AS	20	26	16
W821567	HMK2025C	20	27	25
W821566	HMK2025	20	27	25
W821565	HMK2020	20	27	20
W929730	HMK2018L/L118	20	27	18
W821564	HMK2015	20	27	15
W821443	BK2212	22	28	12
W821444	BK2216	22	28	16
W862394	BK2220	22	28	20
W821517	HK2220LL/3AS	22	28	20
W821574	HMK2420C	24	31	20
W821516	HK2218L/3AS	22	28	18
W821515	HK2216LL/3AS	22	28	16
W821445	BK2512	25	32	12
W821446	BK2516	25	32	16
W821447	BK2520	25	32	20
W821448	BK3016	30	37	16
W821449	BK3020	30	37	20
W821450	BK3026	30	37	26
W821451	BK3520	35	42	20
W862449	HK1712FM	17	23	12
W821509	HK1814L/3AS	18	24	14
W862452	HK1816D	18	24	16
W821510	HK1816LL/3AS	18	24	16
W862460	HK2216D	22	28	16
W929692	HK2516D	25	32	16
W821518	HK2516LL/3AS	25	32	16
W821519	HK2518L/3AS	25	32	18
W821520	HK2518L/5S	25	32	18
W821521	HK2520LL/3AS	25	32	20
W821578	HMK2530	25	33	30
W821577	HMK2525	25	33	25
W821576	HMK2520	25	33	20
W821575	HMK2515C	25	33	15
W862532	HMK2510	25	33	10
W821522	HK2538ZWD	25	32	38
W821523	HK2816C	28	35	16
W862469	HK2820D	28	35	20
W821524	HK2820LL/3AS	28	35	20
W821579	HMK2830	28	37	30
W862537	HMK2920	29	38	20
W821525	HK3016LL/3AS	30	37	16
W821527	HK3018L/3AS	30	37	18
W821529	HK3020LL/3AS	30	37	20
W821580	HMK3026LL/3AS	30	40	26
W821530	HK3516C	35	42	16
W821531	HK3516LL/3AS	35	42	16
W821532	HK3518L/3AS	35	42	18
W862478	HK3520D	35	42	20
W821533	HK3520LL/3AS	35	42	20
W862545	HMK3530	35	45	30

Douilles à aiguilles

Code	Réf	Diam. int.	Diam. ext.	Larg.
W821581	HMK3525	35	45	25
W821534	HK4012	40	47	12
W929705	HK4016LL/3AS	40	47	16
W821535	HK4018L/3AS	40	47	18
W929706	HK4020LL/3AS	40	47	20
W821536	HK4020LLD/3AS	40	47	20
W862550	HMK4030	40	50	30
W821537	HK4518L/3AS	45	52	18
W821538	HK4520LL/3AS	45	52	20
W821582	HMK4520	45	55	20
W821539	HK5020	50	58	20
W821540	HK5022L/3AS	50	58	22
W821541	HK5024LL/3AS	50	58	24
W821543	HKS32X39X34-1	32	39	34
W862515	HMK1420C	14	22	20

Roulements à aiguilles RNA

Roulements à aiguilles cage massive. Version ouverte. Version étanche (LL)



Code	Réf	Diam. int.	Diam. ext.	Larg.
W187460	RNA4900R	14	22	13
W822171	RNA4900LL/3AS	14	22	13
W822173	RNA4901LL/3AS	16	24	13
W187462	RNA4901R	16	24	13
W822174	RNA4902LL/3AS	20	28	13
W187464	RNA4902R	20	28	13
W822175	RNA4903LL/3AS	22	30	13
W187466	RNA4903R	22	30	13
W930879	RNA4904LL/3AS	25	37	17
W187457	RNA49/22R	28	39	17
W822176	RNA4905LL/3AS	30	42	17
W187470	RNA4905R	30	42	17
W822177	RNA4906LL/3AS	35	47	17
W187472	RNA4906R	35	47	17
W187458	RNA49/32R	40	52	20
W822178	RNA4907LL/3AS	42	55	20
W187474	RNA4907R	42	55	20
W822179	RNA4908LL/3AS	48	62	22
W187475	RNA4908R	48	62	22
W930882	RNA4909LL/3AS	52	68	22
W187476	RNA4909R	52	68	22
W822180	RNA4910LL/3AS	58	72	22
W187477	RNA4910R	58	72	22
W187478	RNA4911R	63	80	25
W187479	RNA4912R	68	85	25
W187480	RNA4913R	72	90	25
W187481	RNA4914R	80	100	30
W822181	RNA4915R	85	105	30
W187482	RNA4916R	90	110	30
W822182	RNA4917R	100	120	35
W187483	RNA4918R	105	125	35
W822183	RNA4919R	110	130	35
W822184	RNA4920	115	140	40
W822185	RNA4922	125	150	40
W822186	RNA4924	135	165	45
W822187	RNA4926	150	180	50
W822188	RNA4928	160	190	50
W822189	RNA4932	180	220	60
W862827	RNA4936	205	250	69