



FRAISES A CAROTTER

FRAISE A CAROTTER WELDON 30MM


KENI
Cutting Tools

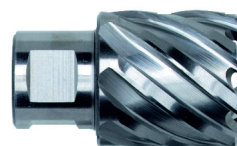
Fraise à carotter HSS 102

Fraise à carotter HSS-M42 - profondeur utile 25 mm. taillé, meulé - attachement Weldon - réaffûtable. Pour perçage sans avant trou, perçage des aciers et aciers moyennement alliés et plastiques.

Code	Réf	Diam.	Prof.
W2025596	102012	12	30mm
W2025597	102013	13	30mm
W2025598	102014	14	30mm
W2025599	102015	15	30mm
W2025600	102016	16	30mm
W2025601	102017	17	30mm
W2025602	102018	18	30mm
W2025603	102019	19	30mm
W2025604	102020	20	30mm
W2025605	102021	21	30mm
W2025606	102022	22	30mm
W2025607	102023	23	30mm
W2025608	102024	24	30mm
W2025609	102025	25	30mm
W2025610	102026	26	30mm
W2025611	102027	27	30mm
W2025612	102028	28	30mm
W2025613	102029	29	30mm
W2025614	102030	30	30mm
W2025615	102031	31	30mm
W2025616	102032	32	30mm
W2025617	102033	33	30mm
W2025618	102034	34	30mm
W2025619	102035	35	30mm
W2025620	102036	36	30mm
W2025621	102037	37	30mm
W2025622	102038	38	30mm
W2025623	102039	39	30mm
W2025624	102040	40	30mm
W2025625	102041	41	30mm
W2025626	102042	42	30mm
W2025627	102043	43	30mm
W2025628	102044	44	30mm
W2025629	102045	45	30mm
W2025630	102046	46	30mm
W2025631	102047	47	30mm
W2025632	102048	48	30mm
W2025633	102049	49	30mm
W2025634	102050	50	30mm
W2025635	102051	51	30mm
W2025636	102052	52	30mm
W2025637	102053	53	30mm
W2025638	102054	54	30mm
W2025639	102055	55	30mm

W2025640	102056	56	30mm
W2025641	102057	57	30mm
W2025642	102058	58	30mm
W2025643	102059	59	30mm
W2025644	102060	60	30mm
W2025645	102065	65	30mm
W2025646	102070	70	30mm
W2025647	102075	75	30mm
W2025648	102080	80	30mm
W2025649	102085	85	30mm
W2025650	102090	90	30mm
W2025651	102095	95	30mm
W2025652	102100	100	30mm

FRAISE A CAROTTER WELDON 50MM


KENI
Cutting Tools

Fraise à carotter HSS 104

Fraise à carotter HSS-M42 - profondeur utile 50mm taillé, meulé - attachement Weldon - réaffûtable. Pour perçage sans avant trou, perçage des aciers et aciers moyennement alliés et plastiques.

Code	Réf	Diam.	Prof.
W2025654	104012	12	50mm
W2025655	104013	13	50mm
W2025656	104014	14	50mm
W2025657	104015	15	50mm
W2025658	104016	16	50mm
W2025659	104017	17	50mm
W2025660	104018	18	50mm
W2025661	104019	19	50mm
W2025662	104020	20	50mm
W2025663	104021	21	50mm
W2025664	104022	22	50mm
W2025665	104023	23	50mm
W2025666	104024	24	50mm
W2025667	104025	25	50mm
W2025668	104026	26	50mm
W2025669	104027	27	50mm
W2025670	104028	28	50mm
W2025671	104029	29	50mm
W2025672	104030	30	50mm
W2025673	104031	31	50mm
W2025674	104032	32	50mm
W2025675	104033	33	50mm
W2025676	104034	34	50mm
W2025677	104035	35	50mm
W2025678	104036	36	50mm
W2025679	104037	37	50mm
W2025680	104038	38	50mm
W2025681	104039	39	50mm
W2025682	104040	40	50mm
W2025683	104041	41	50mm
W2025684	104042	42	50mm